

ARD-3-32-TP-M

Three-phase connection unit with 3 x 32A TPN MCBs

The matt:e ARD connection centres provide a simple to install dedicated EV connection centre, with built in O-PEN® technology, that allows for the connection of EV charge points to the PME earthing facility without the use of earth electrodes.

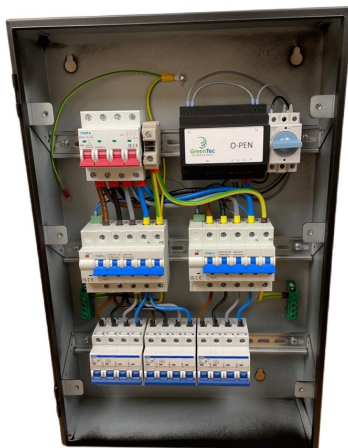
Helping to facilitate compliance with BS:7671. 2018 Amendment 1, 2020 Regulation 722.411.4.1.(iii).

The matt:e ARD connection centres incorporate the unique 5 pole auto reset device that automatically restores power to the load once the fault has cleared.



Product Features and benefits

- Built in O-PEN® technology
- NO EARTH ELECTRODES REQUIRED
- Helps reduce disruptive and costly groundworks
- Removes the risk of striking buried services
- Simple wire in wire out connection
- Phase loss protection
- 3 x 32A TPN MCBs
- Mild steel IP4X enclosure
- Standard 1 Year parts warranty.



Input Volts	400V 50Hz
Max Load	96A per phase
Cable Entry Facility	Top and bottom
Terminal Capacity	25mm ²
Dimensions (H x W x D)	550mm x 360mm x 120mm
Weight	Approximately 7kG
Enclosure	Mild Steel Powder Coated
Ingress Protection	IP4X
Warranty	1 Year

...Simplifying EV connection