

ARD-1-63-TP-SPD

Three-phase connection unit with auto reset isolator and Type 2 SPD, suitable for 1 x 63A TPN load

The matt:e ARD connection centres with unique 5 pole auto reset device and built in Type 2 SPD.

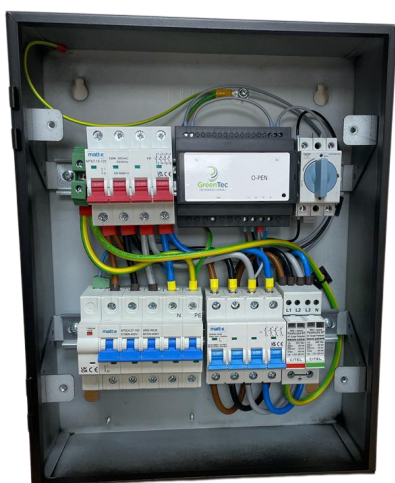
Simple to install, dedicated EV connection centres with built in O-PEN® technology that allows for the connection of EV charge points to the PME earthing facility without the use of earth electrodes.

Helping to facilitate compliance with BS:7671. 2018 Amendment 2, 2022 Regulation 722.411.4.1.(iii).



Product Features and benefits

- Built in O-PEN® technology
- NO EARTH ELECTRODES REQUIRED
- Helps reduce disruptive and costly groundworks
- Removes the risk of striking buried services
- Simple wire in wire out connection
- Complete with Type 2 SPD
- For 1 x 63A TPN load
- Mild steel IP4X enclosure
- Standard 1 Year parts warranty.



Specifications	
Input Volts	400V 50Hz
Max Load	63amps
Cable Entry Facility	Top and bottom
Terminal Capacity	25mm ²
Dimensions (H x W x D)	380mm x 300mm x 120mm
Weight	Approximately 7kg
Enclosure	Mild Steel Powder Coated
Ingress Protection	IP4X
Warranty	1 Year



...Simplifying EV connection