

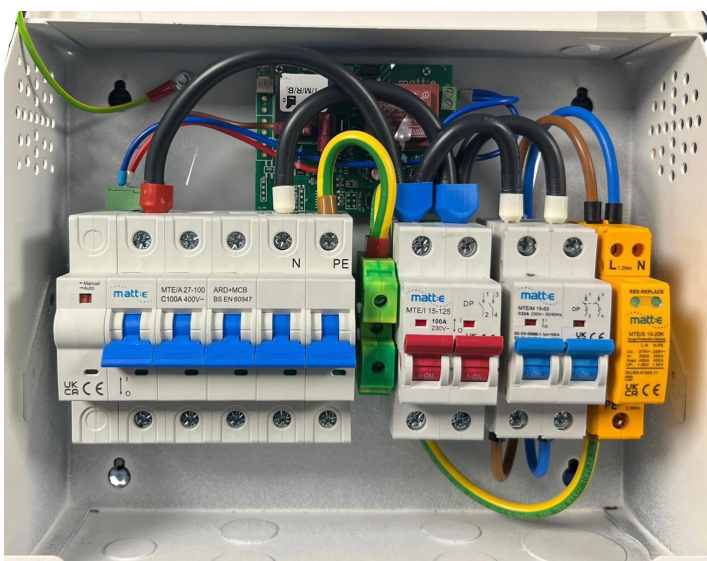
# SP-IC63-SPD

Single-phase PEN Fault Protection with 60A load curtailment and Type 2 SPD

The SP-IC63-SPD single-phase protection device offers a compliant, simple, single connection centre, for EV charge point installations. Allowing connection to the existing TN-C-S earthing facility without the use of earth electrodes. Designed to facilitate compliance with BS:7671 2018, Amendment 2: 2022 Regulation 722.411.4.1 (iv)

The SP-IC63-SPD units come complete with a Type 2 SPD, and has the additional functionality for load curtailment, in line with Regulation 722.311.20. Isolating the charge point from the supply once the household consumption rises above the pre-set limit, and automatically restores the power to the charge point when the load falls back within a satisfactory level.

**Please note**, the load curtailment limit can be set at either, 60A, 80A, or 100A and must be selected at the time of order.



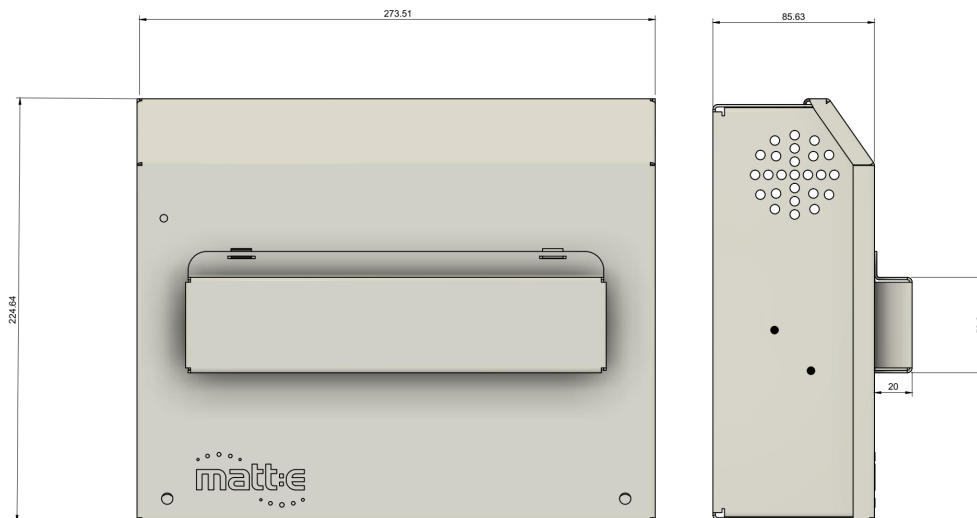
## Product Features and benefits

- Built in matt:e PEN Fault Protection
- NO EARTH ELECTRODES REQUIRED
- Helps reduce disruptive and costly groundworks
- Removes the risk of striking buried services
- Simple wire in wire out connection
- Over current protection
- For loads up to 63A
- Type 2 SPD
- Load curtailment
- Standard 1 Year parts warranty

...Simplifying EV connection

# SP-IC63-SPD

Single-phase PEN Fault Protection with 60A load curtailment and Type 2 SPD



Description	Single-phase Voltage Monitoring and Protection Unit	
Certification	UKCA, CE	
Input Volts	Nominal input voltage single-phase 230V 50Hz	
Max Load	63A	
Terminal Capacity	In	Out
	L/N: 2.5mm <sup>2</sup> -25mm <sup>2</sup>	L/N 2.5mm <sup>2</sup> - 25mm <sup>2</sup>
	E: 2.5mm <sup>2</sup> —16mm <sup>2</sup>	E: 2.5mm <sup>2</sup> - 16mm <sup>2</sup>
Dimensions ( H x W x D )	225mm x 275mm x 85mm	
Weight	Approximately 5kG	
Enclosure	Mild steel	
Ingress Protection	IP2X	
Warranty	The matte: SP-IC63-SPD is guaranteed for a period of 1 years from the date of purchase. This warranty is limited to the replacement of faulty components only.	

...Simplifying EV connection